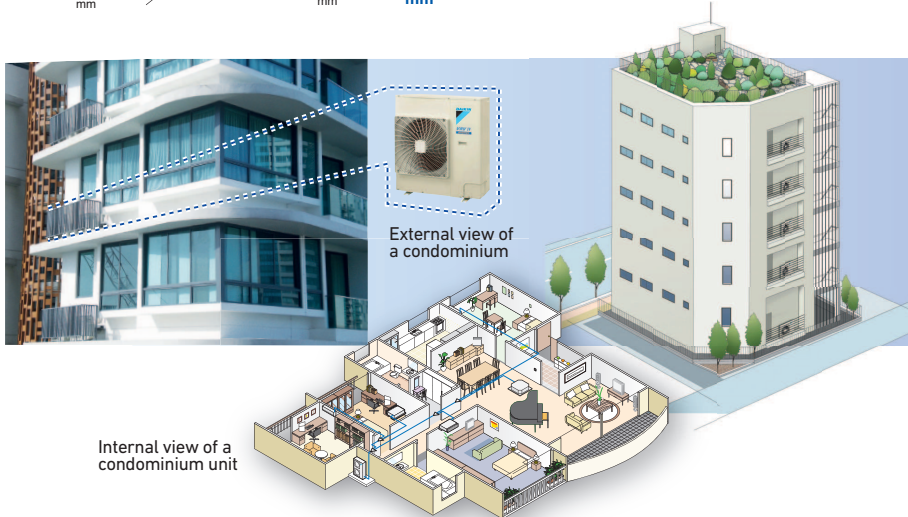
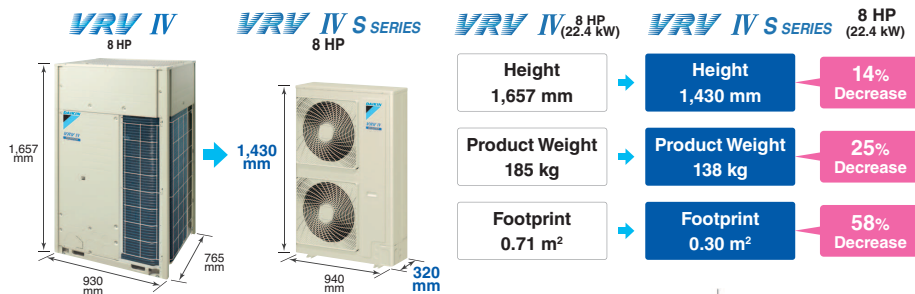


Main Features

Compact & lightweight design

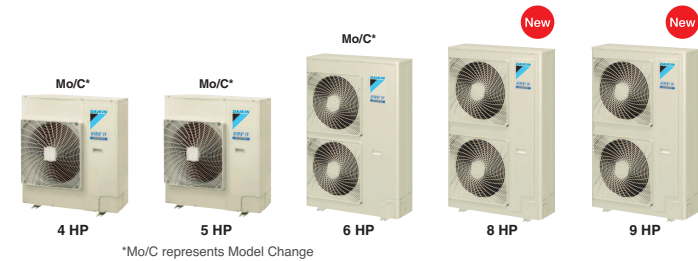
The new design has been optimised for the VRV IV S series, with the height of 4 HP to 5 HP models reduced to only 990 mm. This design gives the building a sleek look externally and provides the occupants with a clear, unobstructed view of the scenery. The VRV IV S series is now slim and compact, with outdoor units that require minimal installation space.



Enhanced lineup

To suit a variety of room sizes, VRV IV S series expands our range to include 8 HP and 9 HP.

VRV IV S SERIES



Lineup

Model Name	RXYMQ4AVE	RXYMQ5AVE	RXYMQ6AVE	RXYMQ8AY1	RXYMQ9AY1
Power Supply	1-phase, 220-230 V/220 V, 50/60 Hz			3-phase, 380-415 V, 50 Hz	
Capacity Range	4 HP (11.2 kW)	5 HP (14.0 kW)	6 HP (16.0 kW)	8 HP (22.4 kW)	9 HP (24.0 kW)
Capacity Index	100	125	150	200	215

5 models

Wide variety of indoor units

Indoor units can be selected from 2 lineups, both VRV and residential indoor units, to match rooms and preferences. A mixed combination of VRV indoor units and residential indoor units can be included into one system, opening the door to stylish and quiet indoor units.

Elegant appearance with European style



New CTXG-P series indoor unit



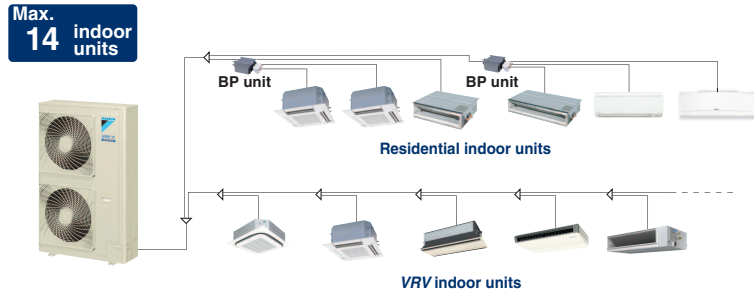
Main Features

Design flexibility and simplified installation

Connectable up to 14 indoor units

As many as 14 indoor units can be connected to a single outdoor unit, making the VRV IV S series a remarkably versatile system.

Note: Total capacity index of connectable indoor units must be 50-130% of the capacity index of the outdoor unit. Refer to page 46 for the maximum number of connectable indoor unit.



Automatic test operation

Simply press the test operation button and the unit performs an automatic system check, including wiring, stop valves, piping, and refrigerant charging amount. The results are returned automatically after the check finishes.

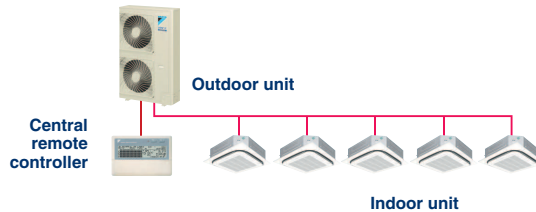
Simple wiring and piping connection

Unique piping and wiring systems make it possible to install a VRV IV S series quickly and easily.

>> Super wiring system

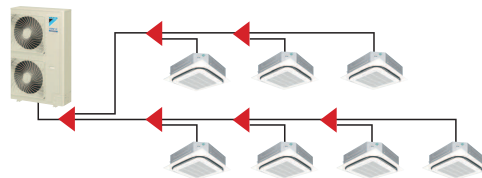
A super wiring system is used to enable shared use of the wiring between indoor and outdoor units and the central control wiring, with a relatively simple wiring operation.

The DIII-NET communication system is employed to enable the use of advanced control systems.



>> REFNET piping system

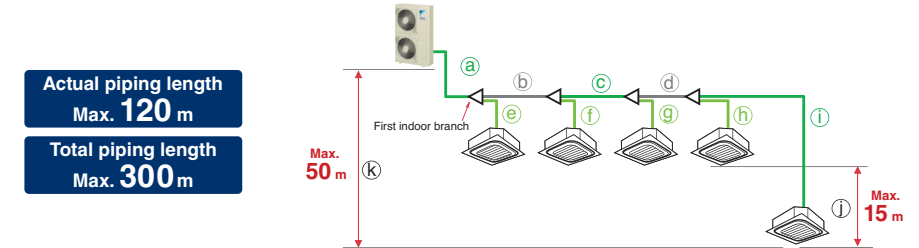
Daikin's advanced REFNET piping system makes installation easy. Only two main refrigerant lines are required in any one system. REFNET greatly reduces the imbalances in refrigerant flow between units, while using small-diameter piping.



Long piping design possible

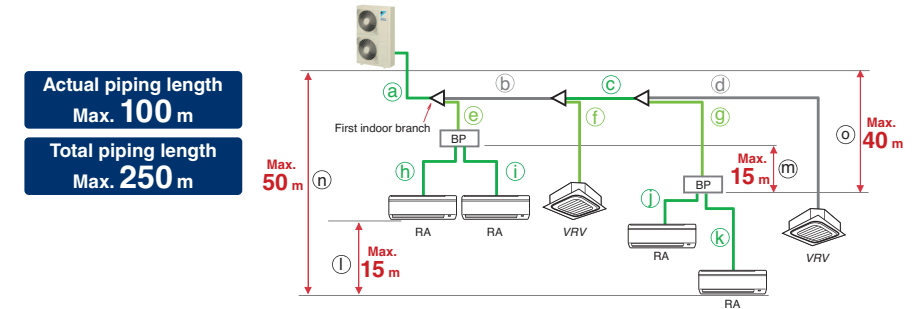
Long piping length offers flexibility in the choice of installation positions, and simplifies system planning.

When only VRV indoor units are connected



		4 HP	5 HP	6 HP	8,9 HP		
Max. allowable piping length	Refrigerant piping length	a+b+c+d+i	50 m	70 m	120 m	100 m	
	Total piping length	a+b+c+d+e+f+g+h+i	250 m	300 m	300 m	300 m	
	Between the first indoor branch and the farthest indoor unit	b+c+d+i	40 m	40 m	40 m	40 m	
Max. allowable level difference	Between the indoor units	j	10 m	15 m	15 m	15 m	
	Between the outdoor unit and the indoor unit	If the outdoor unit is above	k	30 m	30 m	50 m	50 m
	If the outdoor unit is below	k	30 m	30 m	40 m	40 m	

When a mixed combination of VRV and residential indoor units is connected or when only residential indoor units are connected



		4 HP	5 HP	6-9 HP		
Max. allowable piping length	Refrigerant piping length	a+b+c+g+k, a+b+c+d	50 m	70 m	100 m	
	Total piping length	a+b+c+d+e+f+g+h+i+j+k	250 m	250 m	250 m	
	The first indoor branch - the farthest BP or VRV indoor unit	b+c+g, b+c+d	40 m	40 m	40 m	
Max. & min. allowable piping length	BP unit - indoor unit	If indoor unit capacity index < 60	2 m-15 m	2 m-15 m	2 m-15 m	
		If indoor unit capacity index is 60	2 m-12 m	2 m-12 m	2 m-12 m	
		If indoor unit capacity index is 71	2 m-8 m	2 m-8 m	2 m-8 m	
Min. allowable piping length	Outdoor unit - the first indoor branch	a	5 m	5 m	5 m	
Max. allowable level difference	Between the indoor units	l	10 m	15 m	15 m	
	Between BP units	m	10 m	15 m	15 m	
	Outdoor unit - the indoor unit	If the outdoor unit is above	n	30 m	30 m	50 m
		If the outdoor unit is below	n	30 m	30 m	40 m
	Outdoor unit - the BP unit	o	30 m	30 m	40 m	

Indoor Unit Lineup

Daikin offers a wide range of indoor units includes both VRV and residential models responding to variety of needs of our customers that require air-conditioning solutions.

VRV indoor units

Ceiling Mounted Cassette (Round Flow with Sensing) Type

FXFQ-SVM



Presence of people and floor temperature can be detected to provide comfort and energy savings



Ceiling Mounted Cassette (Round Flow) Type

FXFQ-LUV1



360° airflow improves temperature distribution and offers a comfortable living environment.



Ceiling Mounted Cassette (Compact Multi Flow) Type

FXZQ-MVE



Quiet, compact, and designed for user comfort



4-Way Flow Ceiling Suspended Type

FXUQ-AVEB



This slim and stylish indoor unit achieves optimum air distribution, and can be installed without the need for ceiling cavity



Ceiling Mounted Cassette (Double Flow) Type

FXCQ-MVE

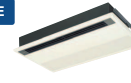


Thin, lightweight, and easy to install in narrow ceiling spaces



Ceiling Mounted Cassette Corner Type

FXKQ-MAVE

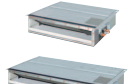


Slim design for flexible installation

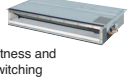


Slim Ceiling Mounted Duct Type (Standard Series)

FXDQ-PBVE(T)



FXDQ-NBVE(T)

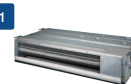


Slim design, quietness and static pressure switching



Slim Ceiling Mounted Duct Type (Compact Series)

New FXDQ-SPV1



Slim and compact design for easy and flexible installation



Ceiling Mounted Duct Type

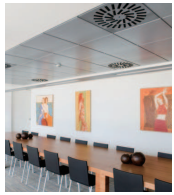
FXMQ-PVE



FXMQ-MAVE



High external static pressure allows flexible installations



Ceiling Suspended Type

FXHQ-MAVE



Slim body with quiet and wide airflow



Wall Mounted Type

FXAQ-PVE



Stylish flat panel design harmonised with your interior décor



Floor Standing Type

FXLQ-MAVE



Concealed Floor Standing Type

FXNQ-MAVE



Suitable for perimeter zone air conditioning



Floor Standing Duct Type

New FXVQ-NY1



Large airflow type for large spaces. Flexible interior design for each tenant.



Residential indoor units with connection to BP units

Ceiling Mounted Cassette Type

FCQ-BVE



Specially designed for false ceilings —for a smooth, modern interior finish



Ceiling Mounted Cassette (Compact Multi Flow) Type

FFQ-BV1B

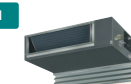


Quiet, compact, and designed for user comfort

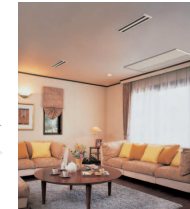


Ceiling Mounted Built-in Type

FBQ-BV1

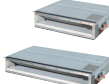


Flexible air discharge unit to fit various forms of space



Slim Ceiling Mounted Duct Type

CDXS-EAVMA



Slim and smooth design suits your shallow ceiling



Wall Mounted Type

New CTXG-PVMAW



New CTXG-PVMS



Elegant appearance with European style



Wall Mounted Type

FTXS-DVMA



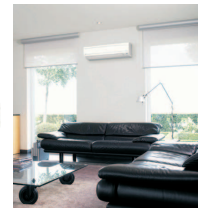
FTXS-EVMA



FTXS-FVMA



Stylish flat panel harmonises with your interior décor



Specifications

Outdoor Units

VRV IV S SERIES

Heat Pump



MODEL		RXYMQ4AVE	RXYMQ5AVE	RXYMQ6AVE	RXYMQ8AY1	RXYMQ9AY1		
Power supply		1-phase, 220-230 V/220 V, 50/60 Hz			3-phase, 380-415 V, 50 Hz			
Cooling capacity	kcal/h	9,600	12,000	13,800	19,300	20,600		
	Btu/h	38,200	47,800	54,600	76,400	81,900		
	kW	11.2	14.0	16.0	22.4	24.0		
Heating capacity	kcal/h	10,800	12,000	15,500	21,500	22,400		
	Btu/h	42,700	47,800	61,400	85,300	88,700		
	kW	12.5	14.0	18.0	25.0	26.0		
Power consumption	Cooling	kW		2.88	3.93	4.14	5.94	6.88
	Heating	kW		2.60	3.04	4.07	6.25	6.82
Capacity control	%	24 to 100	16 to 100		20 to 100			
Casing colour	Ivory white (SY7.5/1)							
Compressor	Type	Hermetically sealed swing type			Hermetically sealed scroll type			
	Motor output	kW		1.92	3.0	3.5	3.8	4.8
Airflow rate	m ³ /min	76		106	140			
Dimensions (HxWxD)	mm	990x940x320		1,345x900x320	1,430x940x320			
Machine weight	kg	71	82	104	138			
Sound level (Cooling/Heating)	dB(A)	52/54	53/54	55/56	57/58	58/59		
Operation range	Cooling	°CDB					-5 to 46	
	Heating	°CWB					-20 to 15.5	
Refrigerant	Type	R-410A						
	Charge	kg		2.9	3.4	3.6	5.8	
Piping connections	Liquid	φ9.5 (Flare)			φ9.5 (Brazing)			
	Gas	φ15.9 (Flare)		φ19.1 (Flare)	φ19.1 (Brazing)	φ22.2 (Brazing)		

Note: Specifications are based on the following conditions:

- Cooling: Indoor temp.: 27°CDB, 19°CWB, Outdoor temp.: 35°CDB, Equivalent piping length: 7.5 m, Level difference: 0 m.
- Heating: Indoor temp.: 20°CDB, Outdoor temp.: 7°CDB, 6°CWB, Equivalent piping length: 7.5 m, Level difference: 0 m.
- Sound level: Anechoic chamber conversion value, measured at a point 1 m in front of the unit at a height of 1.5 m. During actual operation, these values are normally somewhat higher as a result of ambient conditions.
- Refrigerant charge is required.

Outdoor unit combinations

MODEL	RXYMQ4AVE	RXYMQ5AVE	RXYMQ6AVE	RXYMQ8AY1	RXYMQ9AY1		
kW	11.2	14.0	16.0	22.4	24.0		
Class	4	5	6	8	9		
Capacity index	100	125	150	200	215		
Total capacity index of connectable indoor units	Combination (%)	50%	50	62.5	75	100	107.5
		100%	100	125	150	200	215
		130%	130	162.5	195	260	280
Maximum number of connectable indoor units	6	8	9	13	14		